



Bezeichnung: Usdist – Display

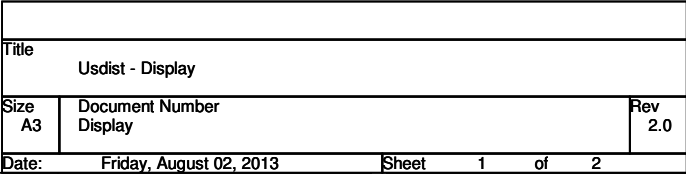
Artikelnummer: #12483, #12636

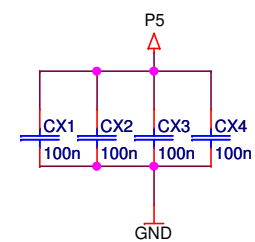
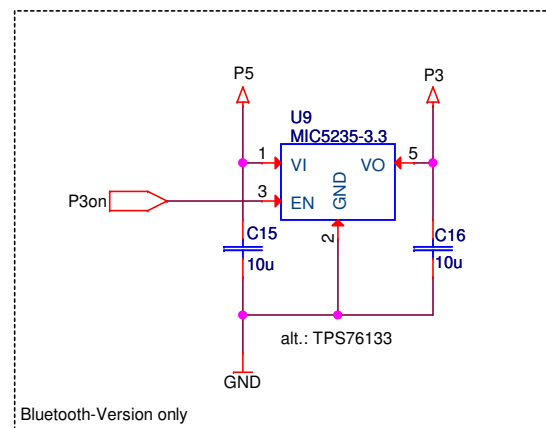
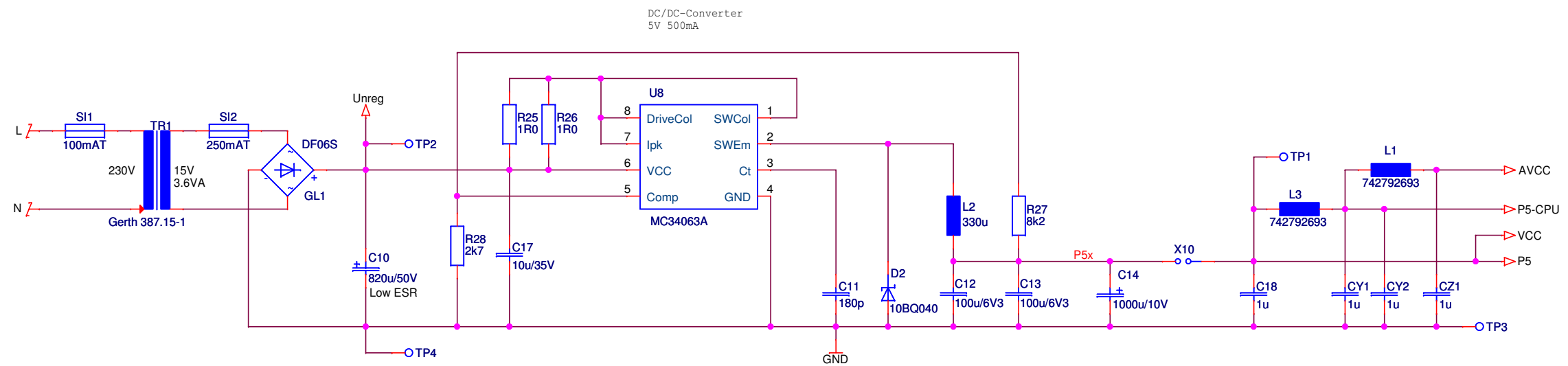
Revision: 2.0

Datum: 2.8.2013

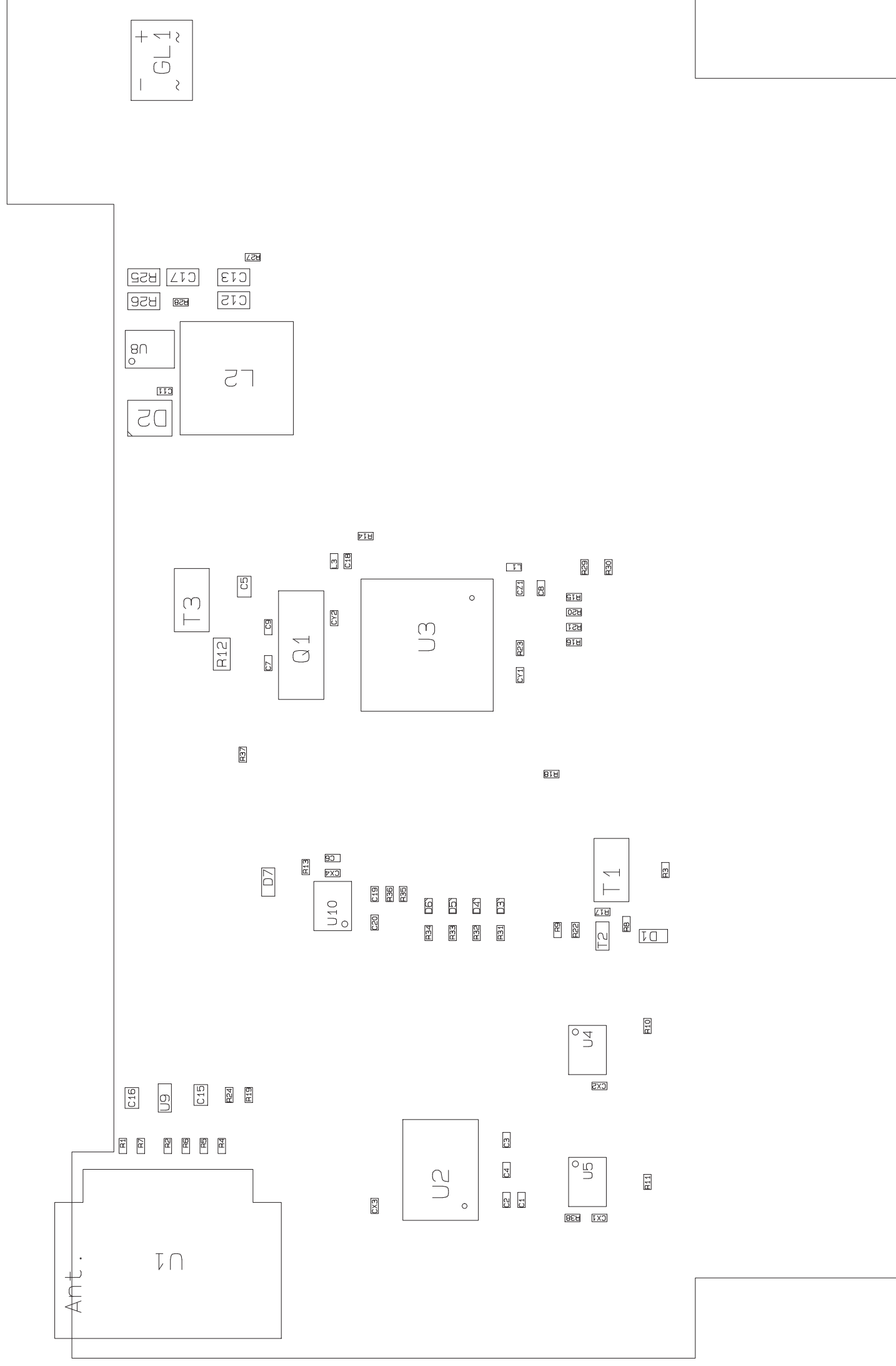
Bearbeiter: Loos

Bemerkung:

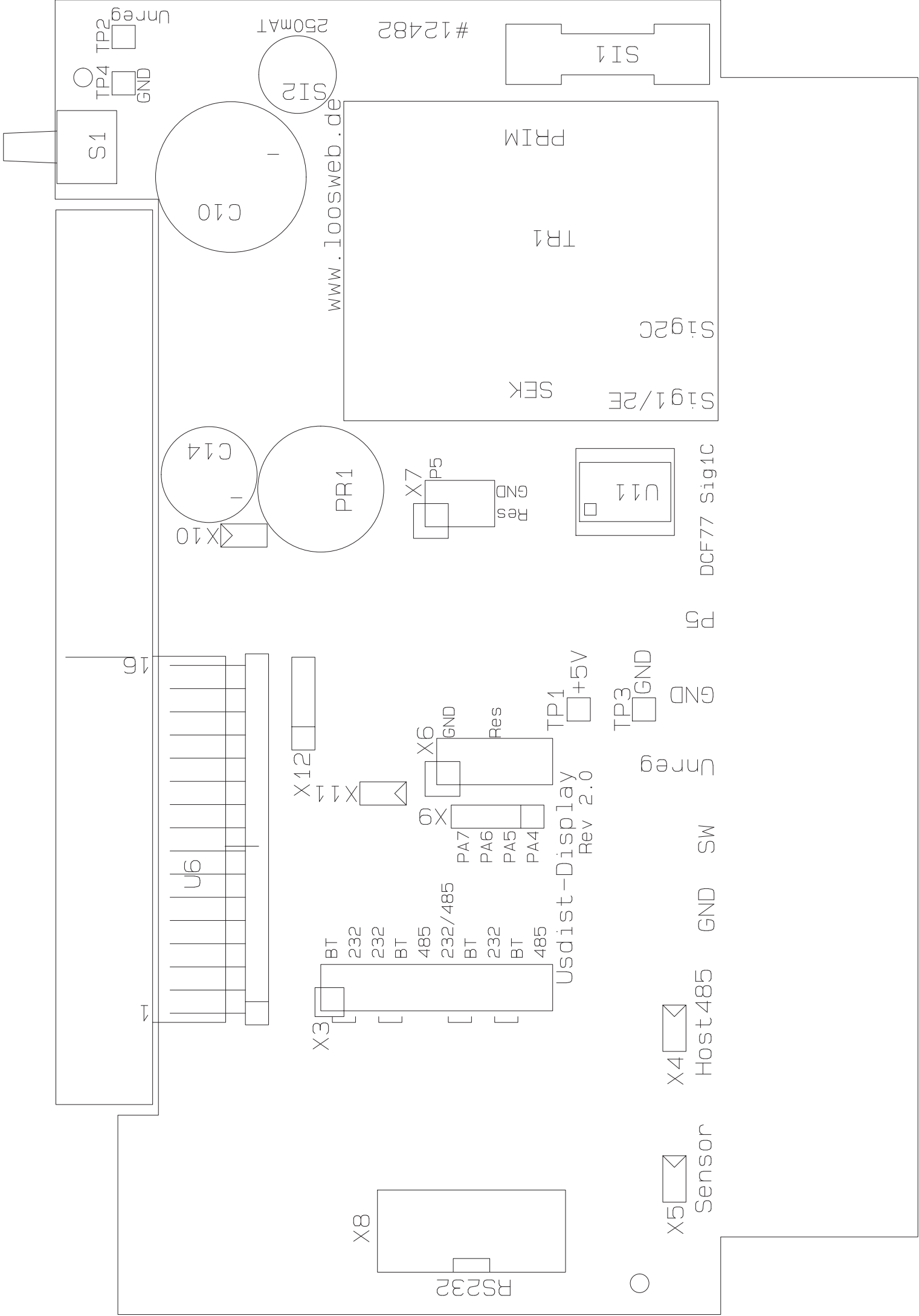




Title			
Usdist - Display			
Size A3	Document Number Display		Rev 2.0
Date:	Thursday, July 11, 2013	Sheet	2 of 2



baer Usdist-Display Rev 2.0
Industrieelektronik GmbH Nürnberg
Bestückung SMD Bauteilseite



Usdist - Display Revised: Friday, July 26, 2013

Display Revision: 2.0

Bill Of Materials July 26,2013 10:19:59

Item	Quantity	Reference	Part	Baer-No	Distributor	Dist.-PartNo
1	10	CX1,C1,CX2,C2,CX3,C3,CX4,C4,C19,C20	100n 0603	#11139	Reichelt	X7R-G0603 100N
2	6	CZ1,CY1,CY2,C6,C8,C18	1u 0603	#11161	Reichelt	X5R-G0603 1,0/25
3	3	C5,C15,C16	10u 0805	#11521	Reichelt	X5R-G0805 10/16
4	2	C7,C9	15p 0603	#12136	Distrelec	838382
5	1	C10	820u/50V RM7.5	#12495	Reichelt	RAD FR 820/50
6	1	C11	180p 0603	#11188	Reichelt	NPO-G0603 150P ?
7	2	C12,C13	100u/6V3 1206	#12101	Reichelt	X5R-G1206 100/6
8	1	C14	1000u/10V RM5.0	#9296	Reichelt	RAD FR 1.000/25
9	1	C17	10u/35V 1206	#12472	Distrelec	833193
10	2	D1,D7	BAV99	#724	Reichelt	BAV 99 SMD
11	1	D2	10BQ040	#10088	Distrelec	604926
12	1	D3	VLMS1300	#10760	Reichelt	LED 0603-360 RT ?
13	1	D4	VLMY1300	#12232	Reichelt	LED 0603-330 GE ?
14	1	D5	VLMTG1300	#12639	Reichelt	LED 0603-180 GN ?
15	1	D6	VLMB1310	#12445	Reichelt	LED 0603-072 BL ?
16	1	GL1	DF06S	#8036	Reichelt	SMD DF 04
17	2	L1,L3	742792693	#9981	Würth	742792693
18	1	L2	330u	#10671	Reichelt	L-PIS4720 330µ ?
19	1	PR1	EPM121	#12240	Reichelt	SUMMER EPM 121
20	1	Q1	3.6864MHz	#11620	Reichelt	3,6864-HC49-SMD
21	3	R1,R2,R4	3k3 0603	#11192	Reichelt	SMD-0603 3,3K
22	1	R3	15 0603	#11415	Reichelt	SMD-0603 15
23	7	R5,R6,R7,R21,R22,R23,R24	4k7 0603	#12159	Reichelt	SMD-0603 4,7K
24	2	R8,R9	10k 0603	#11164	Reichelt	SMD-0603 10K

25	2	R10,R11	120 0603	#11627	Reichelt	SMD-0603 120
26	1	R12	4R7 1206	#12492	Reichelt	SMD 1/4W 4,7
27	2	R13,R36	1M 0603	#11162	Reichelt	SMD-0603 1,0M
28	2	R14,R37	1k 0603	#11191	Reichelt	SMD-0603 1,0K
29	1	R15	47k 0603	#11625	Reichelt	SMD-0603 47K
30	3	R16,R19,R27	8k2 0603	#11194	Reichelt	SMD-0603 8,2K
31	3	R17,R18,R38	68k 0603	#12259	Reichelt	SMD-0603 68K
32	1	R20	10k 0603	#11028	Reichelt	SMD-0603 10K
33	2	R25,R26	1R0 1206	#7975	Reichelt	SMD 1/4W 1,0
34	1	R28	2k7 0603	#11697	Reichelt	SMD-0603 2,7K
35	5	R29,R30,R31,R32,R34	330 0603	#11170	Reichelt	SMD-0603 330
36	1	R33	220 0603	#11998	Reichelt	SMD-0603 220
37	1	R35	27k 0603	#11166	Reichelt	SMD-0603 27K
38	1	SI1	100mAT	#4420	Reichelt	2x PL 120000 + K-TRÄGE 0,1A
39	1	SI2	250mAT	#486	Reichelt	MINI TRÄGE 0,2A ?
40	1	S1	Apem PHAP3305B	#12491	Reichelt	TASTER 3305B
41	4	TP1,TP2,TP3,TP4	TERM	#709	Reichelt	RTM 1,3-100
42	1	TR1	Gerth 387.15-1	#12494	Reichelt	387.15-1
43	1	T1	BCP53	#7969	Reichelt	BCP 53-16 SMD
44	1	T2	BC846B	#739	Reichelt	BC 846B SMD
45	1	T3	BCP56	#7968	Reichelt	BCP 56-16 SMD
46	1	U1	ARF32	#12490	Distrelec	667736
47	1	U2	MAX232ACWE	#4672	Reichelt	MAX 232 ACWE
48	1	U3	ATmega128	#10622	Reichelt	ATMEGA 128-16 TQ
49	2	U4,U5	MAX483	#7445	Reichelt	MAX 483 CSA
50	1	U6	WH2004A	#7673	Reichelt	LCD 204B LED ?
51	1	U8	MC34063A	#11865	Reichelt	MC 34063 AD
52	1	U9	MIC5235-3.3	#12507	Reichelt	TS 5205 CX533 ?
53	1	U10	TLC272	#7973	Reichelt	TLC 272 CD SMD
54	1	U11	ILCT6	#138	Reichelt	6N 139
55	1	X1	ZA16	#8516	Heidenreich	ZA16

56	1	X3	AWP20	#670	Reichelt	MPE 087-2-020
57	2	X4,X5	AWP2.1J	#776	Reichelt	MPE 087-1-002
58	1	X6	AWP10	#778	Reichelt	MPE 087-2-010
59	1	X7	AWP6	#3810	Reichelt	MPE 087-2-006
60	1	X8	IDC10	#7630	Reichelt	MPE 087-2-010
61	2	X9,X12	AWP4.1	#375	Reichelt	MPE 087-1-004
62	2	X10,X11	AWP2	#776	Reichelt	MPE 087-1-002

Note: Components marked with '?' should work but have not been tested.